

**Spring finger contacts** are used for grounding and dynamic connections on electronic assemblies.

These spring finger contacts (SMT) are designed to withstand tens of thousands of compression cycles. They are widely used for connections on automotive projects for example. These spring finger contacts are delivered in reel for automatic SMT assembly.

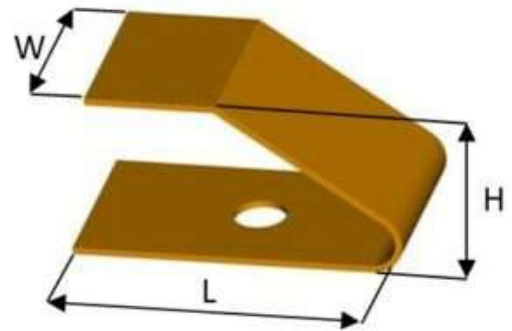
We provide compression rates and associated forces for each spring finger contact on request. Recommended compression is 20% to 40% of the overall contact height.

Spring finger contacts (SMT) can be standard (see our catalog below) or tailor-made.

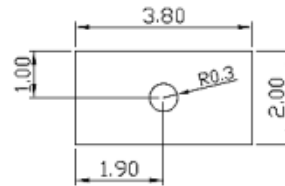
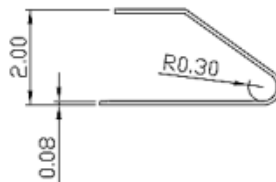
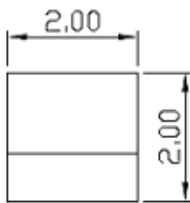


## PRODUCT SPECIFICATIONS

PROPERTY	VALUE TOLERANCE
Thickness	0,1 mm
Width	2,0 mm $\pm$ 0,2
Length	3,8 mm $\pm$ 0,2
Height	2,0 mm $\pm$ 0,2
Basic material	Copper beryllium (CuBe)
Plating	Barrier layer NI Outer layer AU
	1 $\mu$ m - 2 $\mu$ m 1 $\mu$ m - 2 $\mu$ m

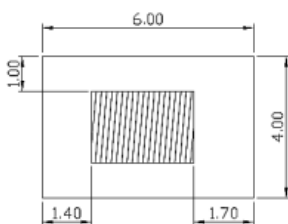


## DIMENSIONS (mm)

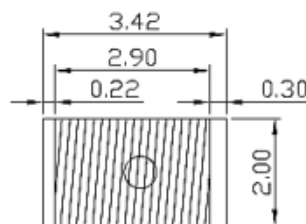


## RECOMMENDED RESERVED AREA & PAD FOR THE PCB (mm)

RECOMMENDED RESERVED AREA ON THE PCB (mm)



RECOMMENDED PAD FOR THE PCB (mm)



### DISCLAIMER

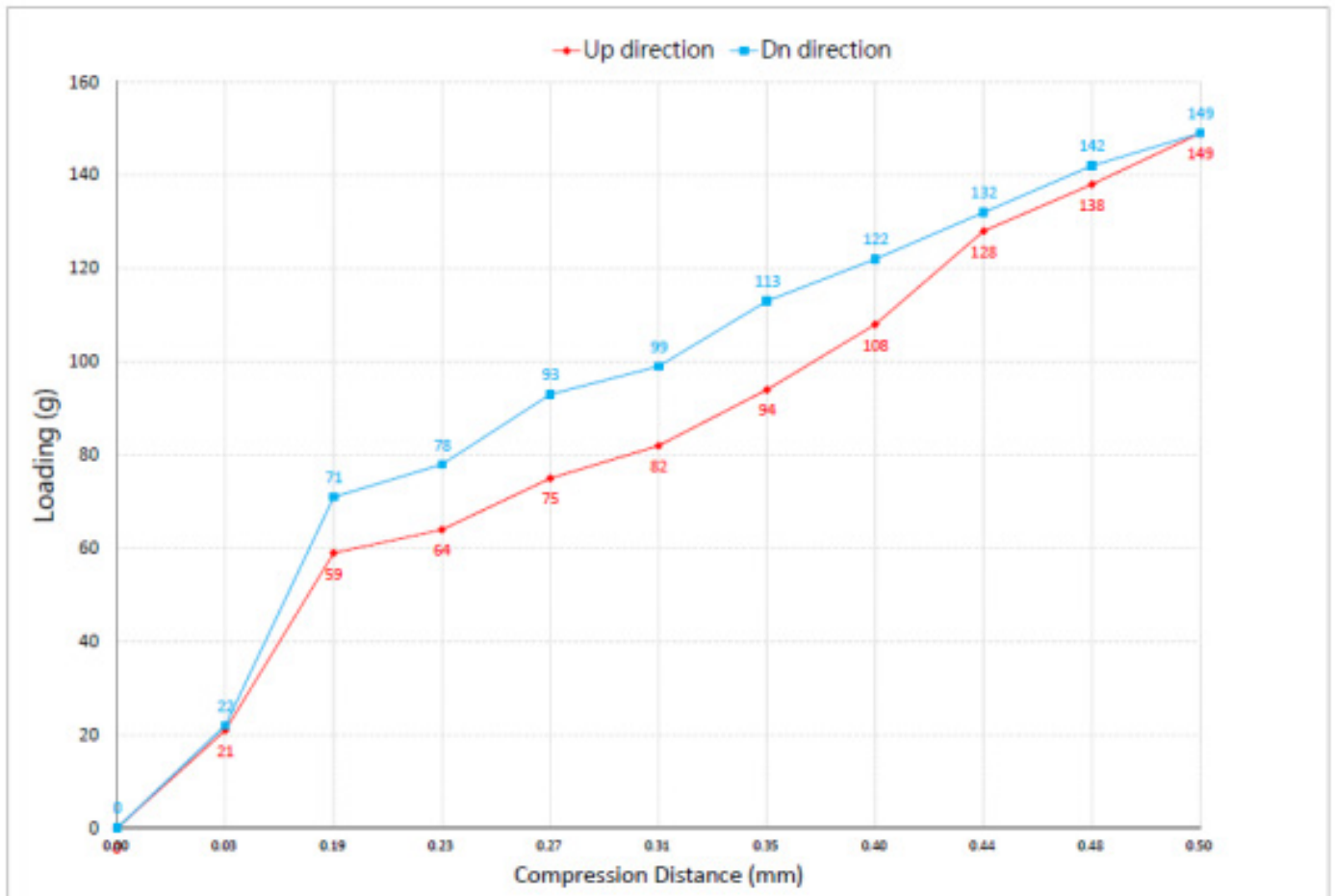
This is only a recommendation based on information available to COMPELMA at the time of printing. Actual land pattern can be significantly different due to various materials and processes used in PCB assembly. COMPELMA makes no representation or warranty of performance based on the recommended land pattern.

**BUILDING AN ITEM NUMBER**

OTG 20 38 020

- ① Contact Spring
- ② Width (ex : 1,5mm = 15)
- ③ Length (ex : 2,5mm = 15)
- ④ Height (ex : 85mm = 085)

**FORCE DEFLECTION DIAGRAM\***

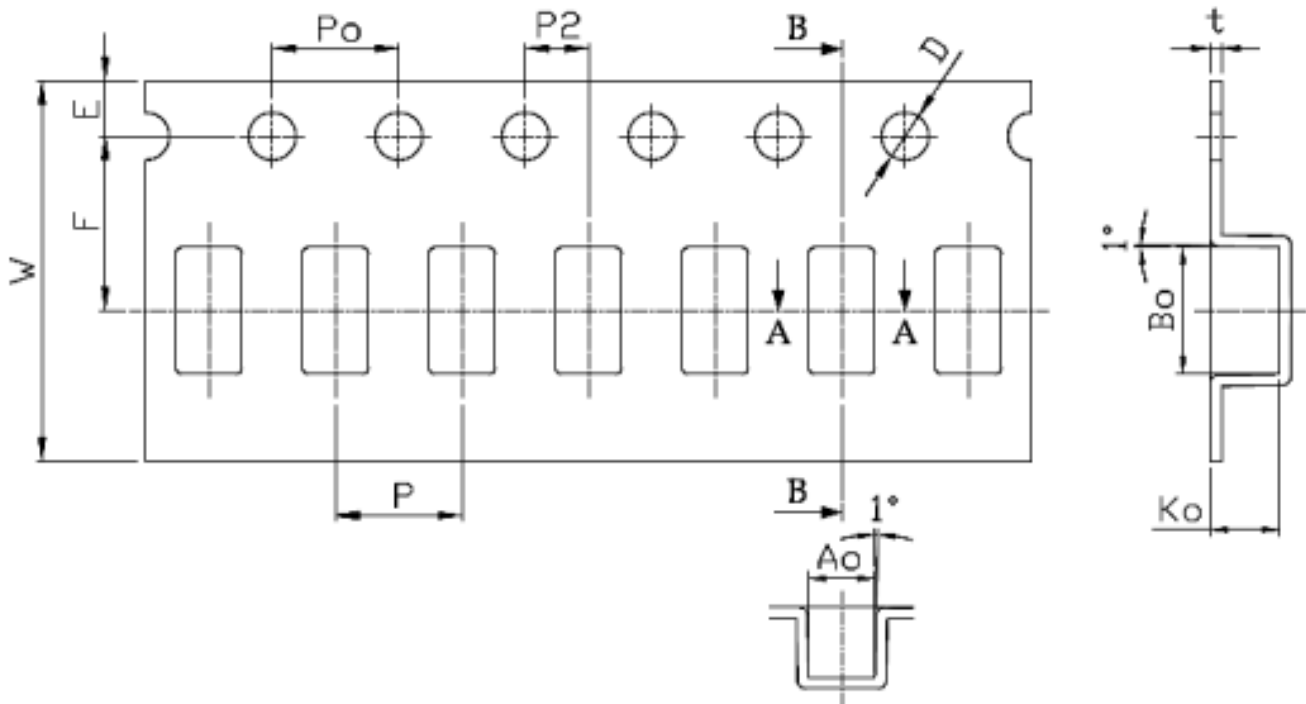


Total Compression Distance(mm)	0.50	
Displacement (mm)	Loading force(g) Down direction	Loading force(g) UP direction
0	0	0
0.03	22	21
0.19	71	59
0.23	78	64
0.27	93	75
0.31	99	82
0.35	113	94
0.4	122	108
0.44	132	128
0.48	142	138
0.5	149	149

NOTE

\*Only valid for gold plated version

PACKING SPECIFICATION TAPE & REEL (mm)



	W	A <sub>0</sub>	B <sub>0</sub>	K <sub>0</sub>	P	F	E	D	P <sub>0</sub>	P <sub>2</sub>	T
	12,00	2,10	4,00	2,20	4,00	5,50	1,75	∅ 1,50	4,00	2,00	0,35
Tolerance	±0,30	±0,10	±0,10	±0,10	±0,10	±0,10	±0,10	+0,10 -0,00	±0,10	±0,10	±0,05

- 10 sprocket hole pitch cumulative tolerance + 0,20 mm.
- Carrier camber not to exceed 1mm in 250 mm.
- A<sub>0</sub> and B<sub>0</sub> measured on a plane 0.3mm above the bottom of the pocket.
- K<sub>0</sub> measured from a plane on the inside bottom of pocket to the top surface of the carrier.
- All dimensions meet EIA-481-B requirements
- Material : Clear non anti-static polystyrene.
- Component load per 13" reel : 1000 pcs.