

**Spring finger contacts** are used for grounding and dynamic connections on electronic assemblies.

These spring finger contacts (SMT) are designed to withstand tens of thousands of compression cycles. They are widely used for connections on automotive projects for example. These spring finger contacts are delivered in reel for automatic SMT assembly.

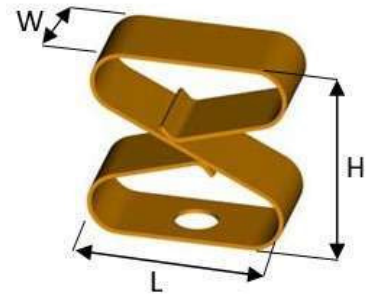
We provide compression rates and associated forces for each spring finger contact on request. Recommended compression is 20% to 40% of the overall contact height.

Spring finger contacts (SMT) can be standard (see our catalog below) or tailor-made.



## PRODUCT SPECIFICATIONS

PROPERTY	VALUE	TOLERANCE
Thickness	0,08 mm	
Width	2.00 mm	+ 0,2
Length	4.50 mm	+ 0,2
Height	4.50 mm	+ 0,2
Basic material	Copper beryllium (CuBe)	
Plating	Barrier layer NI Outer layer AU	1µm - 2µm 0.025µm - 0.075µm

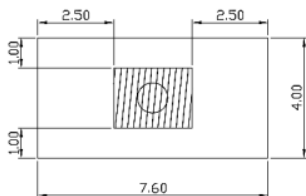


## DIMENSIONS (mm)

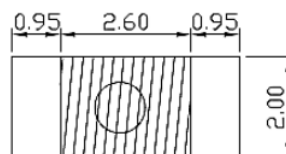


## RECOMMENDED RESERVED AREA & PAD FOR THE PCB (mm)

RECOMMENDED RESERVED AREA ON THE PCB (mm)



RECOMMENDED PAD FOR THE PCB (mm)



### DISCLAIMER

This is only a recommendation based on information available to COMPELMA at the time of printing. Actual land pattern can be significantly different due to various materials and processes used in PCB assembly. COMPELMA makes no representation or warranty of performance based on the recommended land pattern.

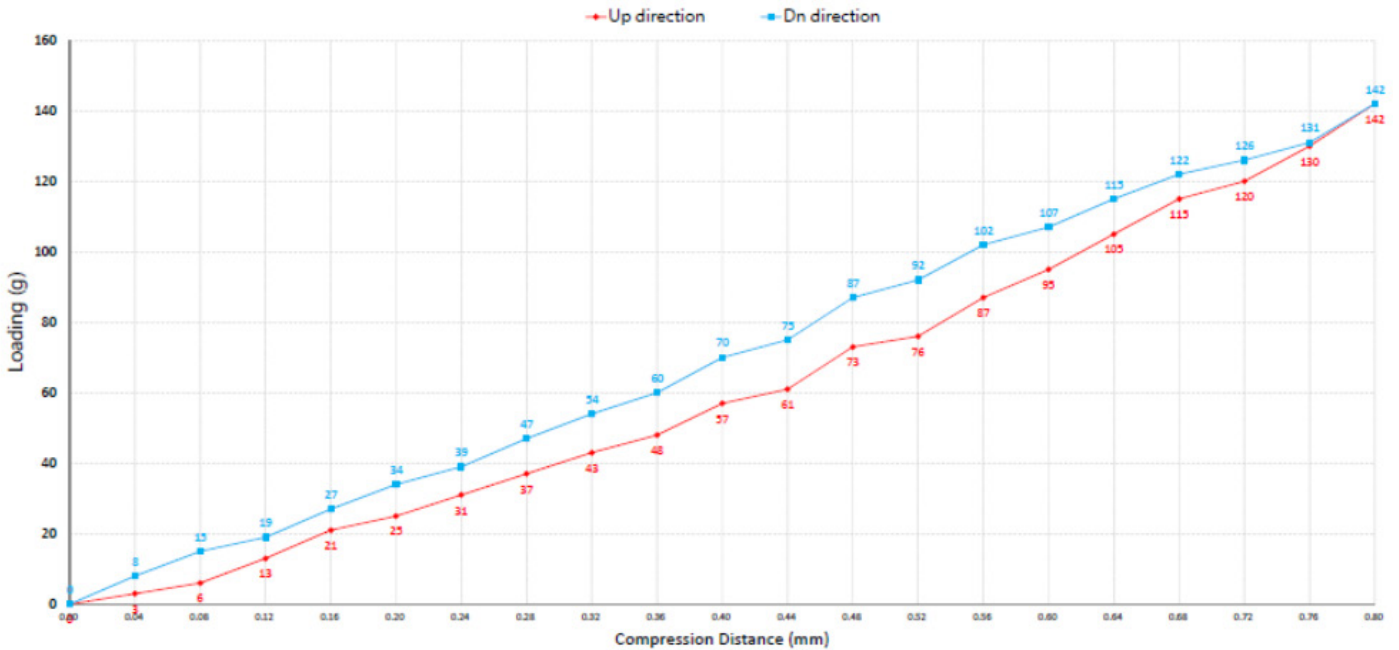
BUILDING AN ITEM NUMBER

OTG 20 45 045

①      ②      ③      ④

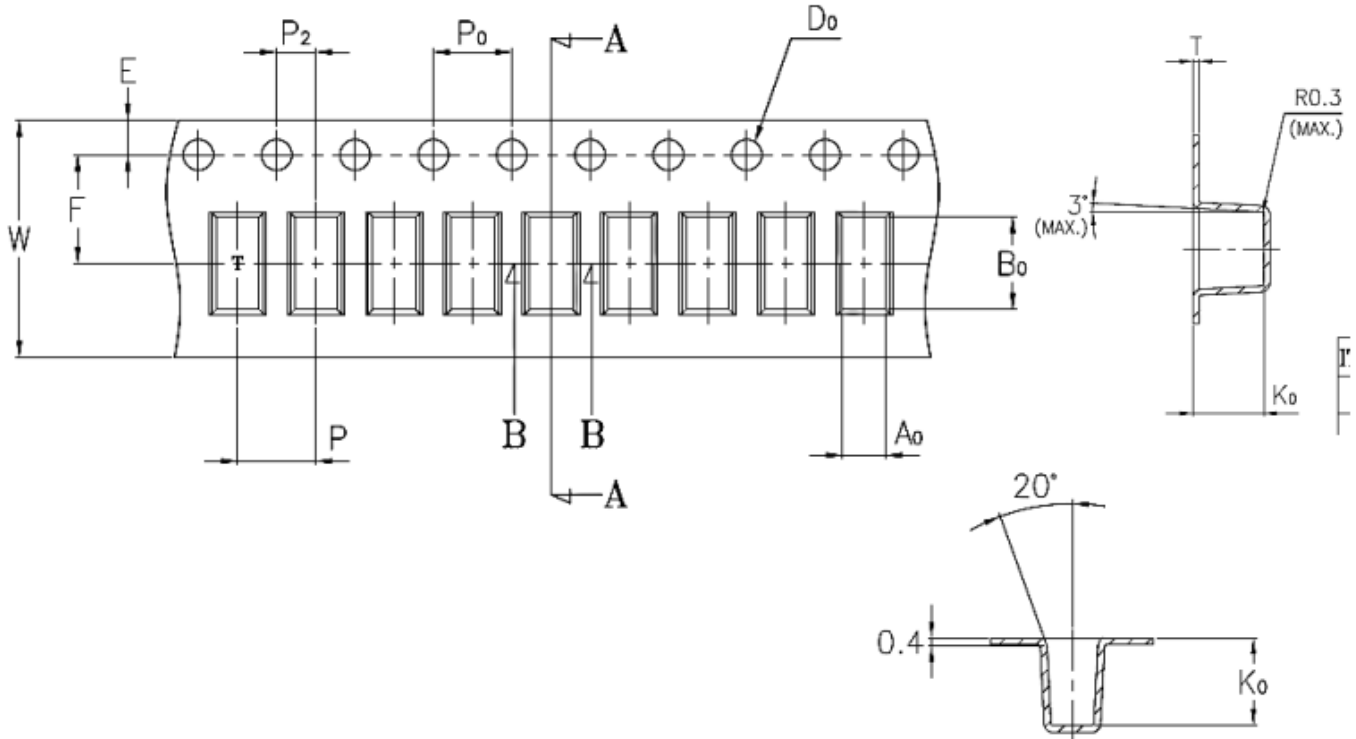
- ① Contact Spring
- ② Width (ex : 1,5mm = 15)
- ③ Length (ex : 2,5mm = 15)
- ④ Height (ex : 85mm = 085)

FORCE DEFLECTION DIAGRAM\*



Total Compression Distance(mm)	0.80	
Displacement (mm)	Loading force(a) Down direction	Loading force(a) UP direction
0	0	0
0.04	8	3
0.08	15	6
0.12	19	13
0.16	27	21
0.2	34	25
0.24	39	31
0.28	47	37
0.32	54	43
0.36	60	48
0.4	70	57
0.44	75	61
0.48	87	73
0.52	92	76
0.56	102	87
0.6	107	95
0.64	115	105
0.68	122	115
0.72	126	120
0.76	131	130
0.8	142	142

PACKING SPECIFICATION TAPE & REEL (mm)



	W	A <sub>c</sub>	B <sub>c</sub>	K <sub>c</sub>	P	F	E	D	P <sub>c</sub>	P <sub>2</sub>	T
	12,00	2,20	4,70	4,60	4,00	5,50	1,75	Ø 1,50	4,00	2,00	0,35
Tolerance	± 0,30	± 0,10	± 0,10	± 0,10	± 0,10	± 0,05	± 0,10	+ 0,10 - 0,00	± 0,10	± 0,05	± 0,05

- 10 sprocket hole pitch cumulative tolerance + 0,20 mm.
- Carrier camber not to exceed 1mm in 250 mm.
- A<sub>0</sub> and B<sub>0</sub> measured on a plane 0.3mm above the bottom of the pocket.
- K<sub>0</sub> measured from a plane on the inside bottom of pocket to the top surface of the carrier.
- All dimensions meet EIA-481-B requirements
- Material : Clear non anti-static polystyrene.
- Component load per 13" reel : 2000 pcs.