

Spring finger contacts are used for grounding and dynamic connections on electronic assemblies.

These spring finger contacts (SMT) are designed to withstand tens of thousands of compression cycles. They are widely used for connections on automotive projects for example. These spring finger contacts are delivered in reel for automatic SMT assembly.

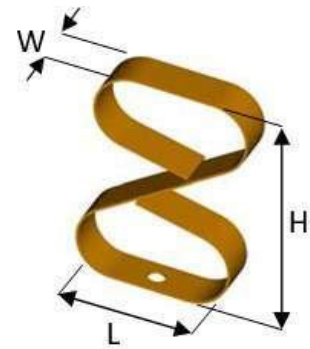
We provide compression rates and associated forces for each spring finger contact on request. Recommended compression is 20% to 40% of the overall contact height.

Spring finger contacts (SMT) can be standard (see our catalog below) or tailor-made.

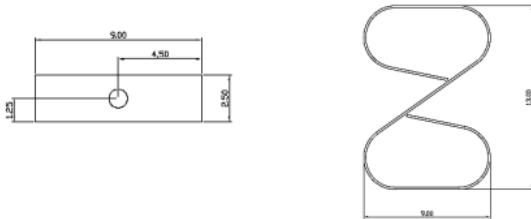


PRODUCT SPECIFICATIONS

PROPERTY	VALUE TOLERANCE
Thickness	0,15 mm
Width	2,50 mm + 0,2
Length	9,00 mm + 0,2
Height	13,00 mm + 0,2
Basic material	Copper beryllium (CuBe)
Plating	Barrier layer NI Outer layer AU
	1µm - 2µm 0,025µm - 0,075µm

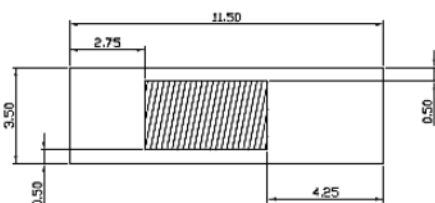


DIMENSIONS (mm)

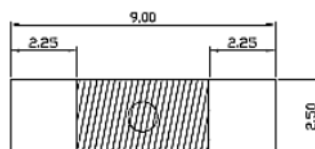


RECOMMENDED RESERVED AREA & PAD FOR THE PCB (mm)

RECOMMENDED RESERVED AREA ON THE PCB (mm)



RECOMMENDED PAD FOR THE PCB (mm)



DISCLAIMER

This is only a recommendation based on information available to COMPELMA at the time of printing. Actual land pattern can be significantly different due to various materials and processes used in PCB assembly. COMPELMA makes no representation or warranty of performance based on the recommended land pattern.

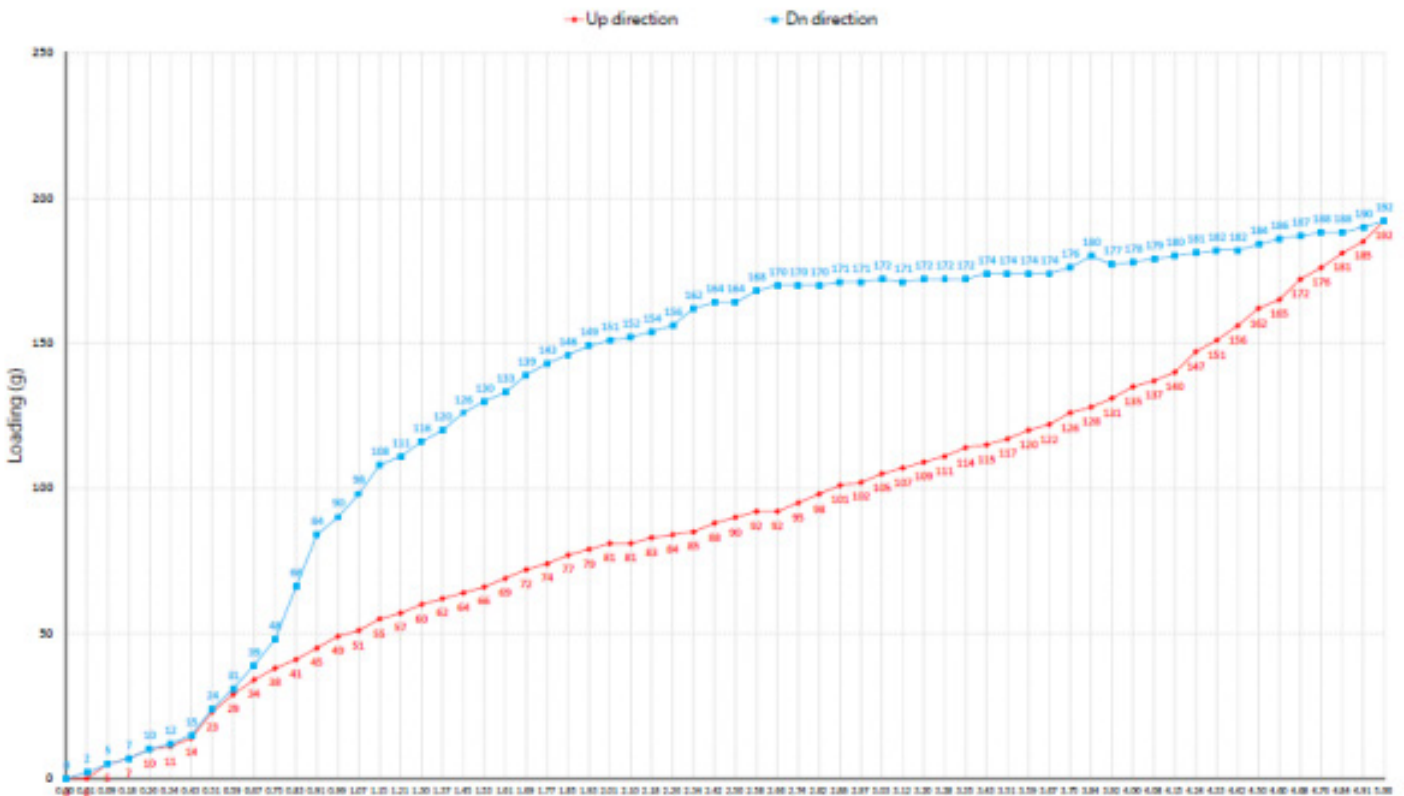
BUILDING AN ITEM NUMBER

OTG 25 90 130

① ② ③ ④

- ① Contact Spring
- ② Width (ex : 1,5mm = 15)
- ③ Length (ex : 2,5mm = 15)
- ④ Height (ex : 85mm = 085)

FORCE DEFLECTION DIAGRAM*



Compression Distance (mm)

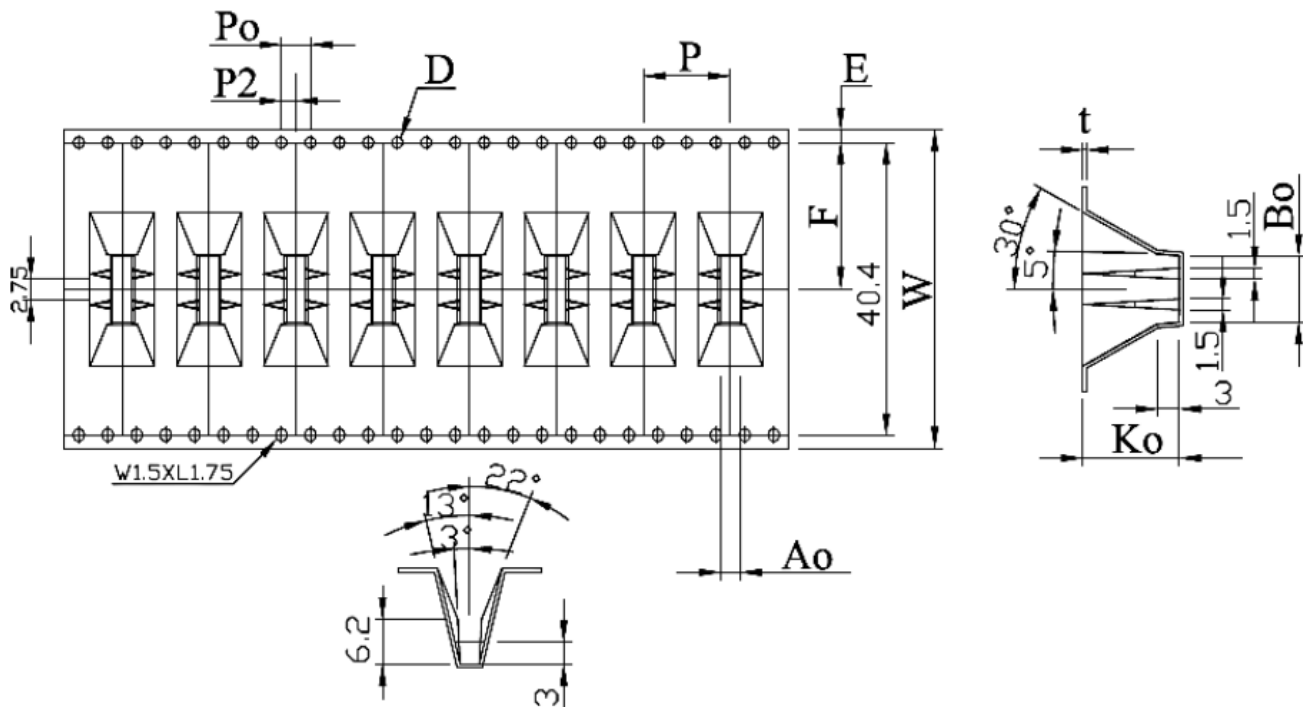
Total Compression Distance(mm)	5.00	
Displacement (mm)	Loading force(g) Down direction	Loading force(g) UP direction
0	0	0
0.01	2	0
0.09	5	5
0.18	7	7
0.26	10	10
0.34	12	11
0.43	15	14
0.51	24	23
0.59	31	29
0.67	39	34
0.75	48	38
0.83	56	41
0.91	64	45
0.99	70	49
1.07	78	51
1.15	86	55
1.21	94	57
1.3	116	60
1.37	120	62
1.45	126	64
1.53	130	66
1.61	133	69
1.69	139	72
1.77	143	74
1.85	146	77
1.93	149	79
2.01	151	81
2.1	152	81
2.18	154	83
2.25	155	84
2.34	162	85
2.42	164	88
2.5	164	90
2.58	168	92

Total Compression Distance(mm)	5.00	
Displacement (mm)	Loading force(g) Down direction	Loading force(g) UP direction
2.66	170	92
2.74	170	95
2.82	171	98
2.91	171	101
2.97	171	102
3.03	172	105
3.12	171	107
3.2	172	109
3.28	172	111
3.35	172	114
3.43	174	115
3.51	174	117
3.59	174	120
3.67	174	122
3.75	176	126
3.84	180	128
3.92	177	131
4	178	135
4.08	179	137
4.15	180	140
4.24	181	147
4.33	182	151
4.42	182	155
4.5	184	162
4.6	186	165
4.68	187	172
4.76	188	174
4.84	188	181
4.91	190	185
5	192	192

NOTE

*Only valid for gold plated version

PACKING SPECIFICATION TAPE & REEL (mm)



	W	A ₀	B ₀	K ₀	P	F	E	D	P ₀	P ₂	T
	44,00	2,65	9,20	13,30	12,00	20,20	1,75	∅ 1,50	4,00	2,00	0,50
Tolerance	±0,30	±0,10	±0,10	±0,10	±0,10	±0,10	±0,10	+0,10 -0,00	±0,10	±0,10	±0,05

- 10 sprocket hole pitch cumulative tolerance + 0,20 mm.
- Carrier camber not to exceed 1mm in 250 mm.
- A₀ and B₀ measured on a plane 0.3mm above the bottom of the pocket.
- K₀ measured from a plane on the inside bottom of pocket to the top surface of the carrier.
- All dimensions meet EIA-481-B requirements
- Material : Clear non anti-static polystyrene.
- Component load per 13" reel : 300 pcs.